

THE ICONN TIMES

INSIDE THIS ISSUE:

<i>New Resources</i>	P.1
<i>Circulation Status</i>	P.1
<i>Free Bookmarks</i>	P.1
<i>Enhancements</i>	P.2
<i>Link to reQuest</i>	P.2

FREE BOOKMARKS

The iCONN bookmark has been redesigned and we are printing an initial supply of 150,000.

75,000 will be distributed to all state employees in their paychecks following implementation of the enhancements described on page 2.

The remaining 75,000 will be reserved for distribution to libraries (at no charge) upon request. They will be supplied in boxes of 500 each.

To order bookmarks, or to see a mock-up of the bookmark, go to <http://www.iconn.org/BookmarksAndCardHolder.aspx>



NEW ICONN RESOURCES!

Gale is making available through iCONN (to all library types) at no additional charge the following licensed resources:

- **History Resource Center: U.S.**
- **History Resource Center: World**

The following titles from the **Gale Virtual Reference Library E-Books**:

- *Beacham's Guide to the Endangered Species of North America*, 1st Edition, 6V (Gale)
- *Biology*, 1st Edition, 4V (Macmillan)
- *Blackbirch Kid's Visual Reference of the United States* (Blackbirch)
- *Blackbirch Kid's Visual Reference of the World* (Blackbirch)
- *Encyclopedia of Popular Culture*, 1st Edition, 5V (St. James)
- *Gale Encyclopedia of Alternative Medicine*, 1st Edition, 4V

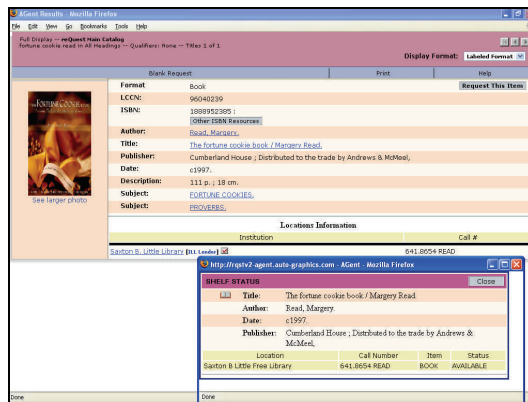
- *Gale Encyclopedia of Cancer*, 1st Edition, 2V
- *Gale Encyclopedia of Genetic Disorders*, 1st Edition, 2V
- *Gale Encyclopedia of Medicine*, 2nd Edition, 5V
- *Gale Encyclopedia of Multicultural America*, 2nd Edition, 3V
- *Gale Encyclopedia of Small Business*
- *Gale Encyclopedia of U. S. Economic History*
- *World of Earth Science*, 1st Edition, 2V (Gale)

The History Resource Centers will be added to all current resource menus. We will incorporate MARC records for each E-Book into the reQuest Main Catalog. We will also add a link to the Gale Virtual Reference Library E-Books from each resource menu (public, school, and college). These changes will be incorporated into iCONN as soon as Auto-Graphics can provide the required authentication support.

CIRCULATION STATUS IN REQUEST

reQuest now provides users with the ability to check real-time shelf status. This service, provided at no additional cost, is available for library holdings from bibliographic records that have an ISBN or ISSN. This ability is confined to those libraries that have Web-accessible catalogs (single or multi-library catalogs) that support the Z39.50 protocol, and have submitted the Z39.50 Target Profile Form located at <http://www.iconn.org/staff/JoiningReQuest.aspx>.

This feature benefits all reQuest users. Patrons at your library familiar with Connecticut (or library staff members assisting them) can easily check the shelf status of an item at another library. At the moment, ILL staff members can manually check the status of an item before requesting it. Looking ahead, we are working to incorporate the ability for the interlibrary loan (ILL) module to check shelf status to eliminate



Bibliographic record with Shelf Status Window requests for items that are checked out.

For more information, visit <http://www.iconn.org/SiteIndex.aspx> and click "Joining reQuest" or contact: Stephen Cauffman, scauffman@eslib.org or Gail Hurley, ghurley@cslib.org.

